

Acting Now for Sustainable Infrastructure



Impact Report

2024



Foreword from Our Co-Founders

As we reflect on the achievements of 2024, we are filled with a deep sense of pride for the progress we have made at ORIS. Last year was a milestone in our journey—a year that truly defined who we are as a company and set the stage for what lies ahead.

In 2024, we took a transformative step by becoming legally a Société à Mission, officially solidifying our commitment to being a mission-driven organisation. This transition is not just a legal status, but a declaration of our unwavering dedication to our purpose: driving a structural shift toward sustainable infrastructure.

Last year, **we also refined our values—Care, Dare, Together**—which are at the core of everything we do. These values are not just words on paper; they guide how we work, how we collaborate, and how we approach every challenge. They reflect our commitment to caring for each other, daring to innovate and take risks, and working together to achieve meaningful progress.

We've made significant strides in 2024. Our team has grown stronger, our platform has become more powerful, and our solutions are gaining global recognition—all of these are testaments to the dedication and hard work of our team and partners. They reflect our mission in action as we continue to push forward in creating a more sustainable, inclusive future for infrastructure.

As we look ahead, the future is full of exciting opportunities. With the foundation we've built, we are ready to accelerate our impact. **We will continue to innovate, focusing on AI-driven solutions and expanding our capabilities**, all while staying true to our values. Together, we will continue to empower our customers to build a better, more sustainable world.

We are excited for the years ahead and the work that lies before us. With the strength of our team and the guidance of our values, we will continue to create **solutions that inspire trust, impact, and progress**.

Thank you for being part of this incredible journey. Let's keep moving forward, together!

Nicolas Miravalls, Co-founder & CEO

Renaud de Montaignac, Co-founder & COO



“Last year was a milestone in our journey —a year that truly defined who we are as a company and set the stage for what lies ahead.”

Building Transportation Infrastructure for a Sustainable Future

Today's world faces urgent challenges, from climate change and biodiversity loss to economic uncertainties and persistent social inequalities. Building linear transportation infrastructure holds a dual role: while it is instrumental in addressing economic growth and social disparities by connecting people to market places and public services, it also contributes significantly to raw material consumption and carbon emissions. At ORIS, we see these challenges as a call to action and an opportunity to make meaningful change.

2024 KEY FIGURES



16 projects



+1,400 Users



19,199 of kms assessed



**+44,000 material suppliers
referenced inc. 7% of sites
with recycled materials**

ACTING NOW FOR SUSTAINABLE INFRASTRUCTURE

As the first digital materials platform dedicated to sustainable linear transportation infrastructure (roads, rails), ORIS leverages the transformative power of advanced digitalization—artificial intelligence, machine learning, and data science—to enable informed decisions. By focusing on the critical role of construction materials, which account for 60% of infrastructure costs and 85% of its carbon footprint, we provide stakeholders in the infrastructure construction ecosystem—owners, engineers, contractors, and material suppliers—with the tools to design and build resilient, sustainable, and inclusive infrastructure.

Through our platform, we empower our sector to move beyond traditional approaches, unlocking the potential of local sourcing, circular economy principles, and climate resilience. Each road is unique, and our holistic approach ensures that materials, design, and environmental considerations are integrated from the earliest stages, helping communities build better while addressing the UN Sustainable Development Goals.

Behind ORIS is a diverse, international team united by a shared commitment to innovation, responsibility, and well-being. From civil engineers to AI specialists, climate and LCA experts, we bring together expertise across disciplines to create real impact. We are motivated not only to develop better infrastructure but also to redefine what it means to be a company—one that prioritises sustainability, innovation and the growth of its people.

ORIS exists to transform linear transportation infrastructure design and construction, ensuring that the roads and networks we build today can withstand the challenges of tomorrow while leaving a positive legacy for future generations.

Together, we are paving the way toward a more sustainable and equitable future, one road at a time.



A Scientific Approach to Sustainability

At ORIS Materials Intelligence, sustainability is at the heart of our purpose and vision, supported by a rigorous scientific foundation.

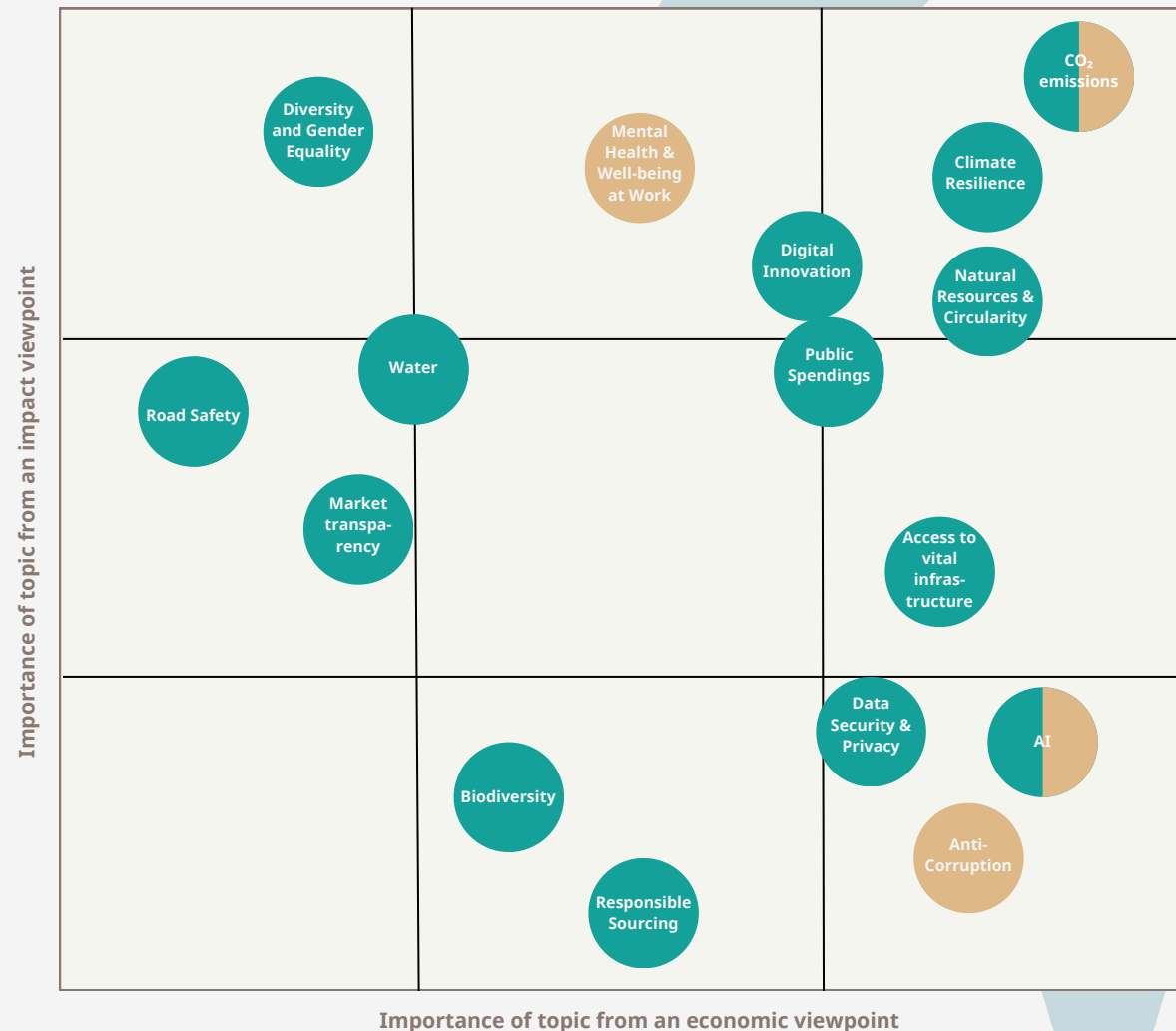
Our approach integrates **three core areas of expertise**:

1. Construction Materials Knowledge – Drawing on deep sector expertise to assess materials' performance, sourcing, and environmental impact.
2. Environmental Engineering – Following life-cycle assessment (LCA) principles to provide accurate and comprehensive sustainability insights.
3. Advanced Digitalisation – Harnessing AI and machine learning to deliver actionable data.

We use **recognised international standards and models**, such as EN 15804+A2 and ISO 21930 for carbon modeling, which were validated by Intertek. For resilience, we follow the UNFCCC (United Nations Framework Convention on Climate Change) models. This scientific rigor ensures reliable assessments, bridging critical knowledge gaps in infrastructure construction.

Our platform follows the **Life Cycle Assessment approach (LCA)** to holistically evaluate the environmental impact of infrastructure projects, from extraction to end-of-life. It enables early modelling and visualisation of material performance, helping stakeholders make informed decisions about carbon footprint, resource efficiency, resilience, costs, and maintenance.

ORIS is committed to sustainability **in both our solutions and operations, minimising our footprint and fostering inclusivity**. ORIS is a member of the UN Global Compact, a voluntary initiative based on CEO commitments to implement universal sustainability principles and to undertake actions to meet UN goals.



- Relevance for our customers
- Relevance for our company



On a Mission for a Sustainable Future

In February 2024, ORIS Materials Intelligence **took a defining step forward** by becoming an official mission-driven company under the French legal status of société à mission. This milestone reflects our deep commitment to transforming the linear transportation infrastructure construction sector.

Our mission, **“To enable the construction sector to design inclusive, efficient, resilient, and low-carbon infrastructure projects by making the most of local resources and social and environmental data, connecting them through digital solutions,”** is the core of our company's actions and projects.

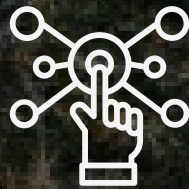
To ensure accountability and long-term impact, **ORIS has created a Mission Committee, which meets twice a year.** This committee includes subgroups focused on strategic projects that drive the implementation of our mission. Any employee can join subgroups and contribute to shape the mission and projects. By fostering collaboration and oversight, the committee ensures our efforts align with our objectives.

MISSION OBJECTIVES

To realise this vision, we have established four mission objectives:

1. **Empowering Decision-Making with Digitised Knowledge:** By delivering insights on the environmental and social impacts of construction materials, we provide our sector with an innovative digital solution to design sustainable infrastructure from the early stages of a project.
2. **Optimizing Environmental Impact:** Through advanced digital solutions, we help reduce the environmental impact of linear transportation infrastructure, promoting sustainability across the entire value chain.
3. **Creating Inclusive Transport Networks:** Our mission drives us to design infrastructure that improves accessibility and connectivity for communities worldwide, for a greater social impact.
4. **Fostering Balanced Growth:** Within ORIS and in our projects, we prioritise the well-being of our employees and a shared value creation.

Our mission is guided by our values: Care, Dare, Together.



**Digitising the
Construction
Materials Sector**



**Improving the
Social Impact**



**Lowering the
Environmental Impact
of Infrastructure**



**Ensuring an
Equitable Growth**

Our Values: The Foundation of ORIS

In 2024, ORIS formalised its core values—Care, Dare, Together—building on principles that have long defined the company's culture. These values guide how we work, make decisions, and interact with each other, creating a strong and cohesive foundation for achieving our mission.

CARE

Care is central to who we are at ORIS. **We prioritise kindness, respect, and empathy, fostering an environment where everyone feels valued and supported.** This extends to our commitment to delivering high-quality work that meets the needs of our stakeholders and contributes to a sustainable future. Care also means maintaining positivity, celebrating successes, and supporting one another in overcoming challenges, ensuring a culture that promotes well-being and collaboration.

DARE

Daring to innovate and push boundaries defines our approach.

At ORIS, we empower individuals to think creatively, take ownership of their work, and embrace new challenges. This value drives our commitment to exploring innovative digital solutions and bold ideas that enable sustainable infrastructure. It also reflects our belief in continuous improvement, where calculated risks and learning from experiences are key to advancing our goals and driving impact.

TOGETHER

Collaboration is at the heart of everything we do. ORIS thrives on the diversity of perspectives within our team, ensuring that everyone's voice is heard and valued. By **working together with trust, open communication, and mutual support**, we achieve shared success and overcome challenges as a unified team. This collective spirit extends to how we engage with our customers

CARE.

DARE.

TOGETHER.

Progressing on Our Mission

Following the formal adoption of our mission in early 2024, ORIS has established an organisational framework to bring it to life effectively. A dedicated committee, comprising internal team members from diverse backgrounds, has identified over 60 actions—either implemented, ongoing, or in development—that actively support our mission.

These actions are structured around three areas: Raising Awareness, Taking Action to Progress, and Measuring Impact.

RAISING AWARENESS ON OUR MISSION

We continued both external and internal outreach efforts to amplify ORIS's mission and values, targeting industry stakeholders, academic institutions, the broader public, and our internal teams.

- *Events & Conferences:* Active participation in key industry events enhanced ORIS's visibility, providing platforms to share insights on sustainable infrastructure practices.
- *Knowledge Sharing:* Publication of thought leadership blog posts and scientific papers engaged with external audiences and promoted dialogue on what a sustainable infrastructure is.
- *Strategic Collaborations:* Ongoing engagement with organisations such as the Asian Development Bank, European Investment Bank, Asian Infrastructure Investment Bank, UNIDO, and other Multilateral Development Banks (MDBs) supports progress on developing sustainable transport networks.

TAKING ACTION TO PROGRESS

Concrete actions have been identified and implemented to support progress in our mission:

- *Internal Sustainable Practices:* Development of a travel policy promoting low-carbon mobility and commuting, alongside the organisation of Climate Fresques workshops for employees to foster climate knowledge.
- *Mental Health and Well-being:* Organisation of mental health sessions and flexible work policies to support employee well-being and create a resilient workplace culture.

MEASURING IMPACT

To ensure accountability and continuous improvement, key performance indicators (KPIs) have been identified to track and disclose our progress:

- *Environmental Metrics:* Measurement of carbon emissions, circularity, and climate resilience in projects to support our sustainability goals (see page 8 for details).
- *Social Metrics:* Ongoing work to define KPIs that measure social impact, ensuring our initiatives contribute meaningfully to inclusive and sustainable development.

2024 KEY FIGURES



**Participated in 17
Events & Conferences**



Published 5 papers

EXTERNAL RECOGNITION & ACADEMIC PARTNERSHIPS

- *Awards:* ORIS received recognition for its contribution to sustainable infrastructure including the Decarbonisation & Circular Economy Award 2024 from the International Road Federation (IRF) and the Best Business Practice Award 2024 from Ecobalance, highlighting our leadership in advancing sustainable practices.
- *Academic Collaborations:* Partnerships with leading universities supported research on sustainability in construction and infrastructure resilience, fostering innovation and thought leadership in the sector.



Best Business Practice Award 2024



**Decarbonisation & Circular Economy
Award 2024**

Measuring Our Positive Impact on Linear Transportation Infrastructure

At ORIS, we are committed to supporting our clients and partners to identify the best solutions that minimise environmental impact while maximising socio-economic impact. We support our partners to set up a sustainable strategy supported with a technology-driven approach. We highlight here the global combined effect of measures and levers we have identified to help them reduce the impact of their projects

CO₂ EMISSIONS REDUCTION

Our approach enabled us to identify solutions to reduce CO₂ emissions in our client projects by optimising material selection and construction processes. In 2024, our assessments covered 14.8 MT of CO₂ eq., with an overall **identification of reduction levers amounting to 3.1 MT CO₂ eq.**, which is 3 times the level identified for 2023.

RESOURCE EFFICIENCY

ORIS helps project owners and designers pinpoint strategies to optimise natural resource use, by favouring recycled materials and identifying material flow options which enable to reuse materials excavated in one part of the project to another part - reducing extraction and waste.

Our assessments in 2024 covered 33 MT of natural resources, with solutions identified enabling **to avoid usage of 4.4 MT of raw materials.**

BUDGET OPTIMISATION

Building sustainable infrastructure does not cost more, as we have shown in our projects. ORIS's predictive models help clients identify the most sustainable and cost-effective materials and construction methods. In 2024, our assessments led to identify **combined budget savings of \$24M**, demonstrating that sustainability and financial performance go hand in hand.

RESILIENCE

Climate resilience is at the core of ORIS's impact strategy. By integrating risk assessments and adaptive material recommendations, we provide clients with data-driven insights to build infrastructure that withstands climate challenges such as extreme weather conditions and degradation. In 2024, **we assessed resilience for 18,553 km of roads**, ensuring long-term durability and reduced maintenance needs.

Through these key impact areas, ORIS is helping the construction industry transition towards a sustainable, resilient, and circular future.

CO₂ - 3.1MT CO₂eq.

carbon emissions potentially avoided

Equivalent to



Annual carbon footprint of
420,000 EU citizens



Annual emissions of
964,000 cars



Emissions of **1.1 M** of
computers over their lifecycle



Planting **3.6 M** trees



- 4.4 MT

primary resources
potentially avoided



- \$24M

savings identified on
initial budgets



18,553 km

of roads
assessed for climate resilience

Measuring Our Carbon Footprint

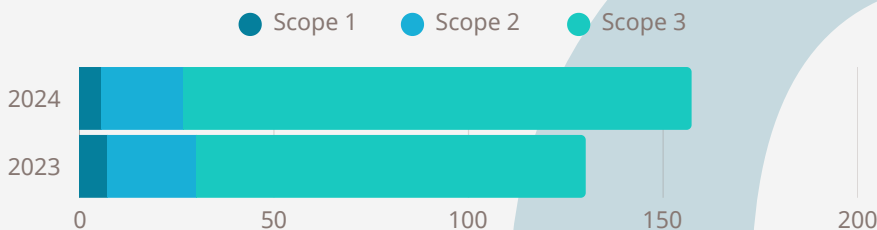
At ORIS, we are committed to understanding and improving our carbon footprint as part of our mission to enable more sustainable infrastructure. This year, our internal assessment reflects an increase in our measured carbon footprint, **amounting to 157.31t vs 130.21t CO₂ eq. in 2023**. This rise is primarily due to the inclusion of a more comprehensive scope, notably **accounting for food consumption**, which was not previously measured.

Encouragingly, **we have observed a decrease in emissions related to commuting and office operations**. This reduction is directly linked to the relocation of our Lyon offices in the city center, a move that has enabled greater use of public transport and a reduced impact due to a different energy mix in our workspace.

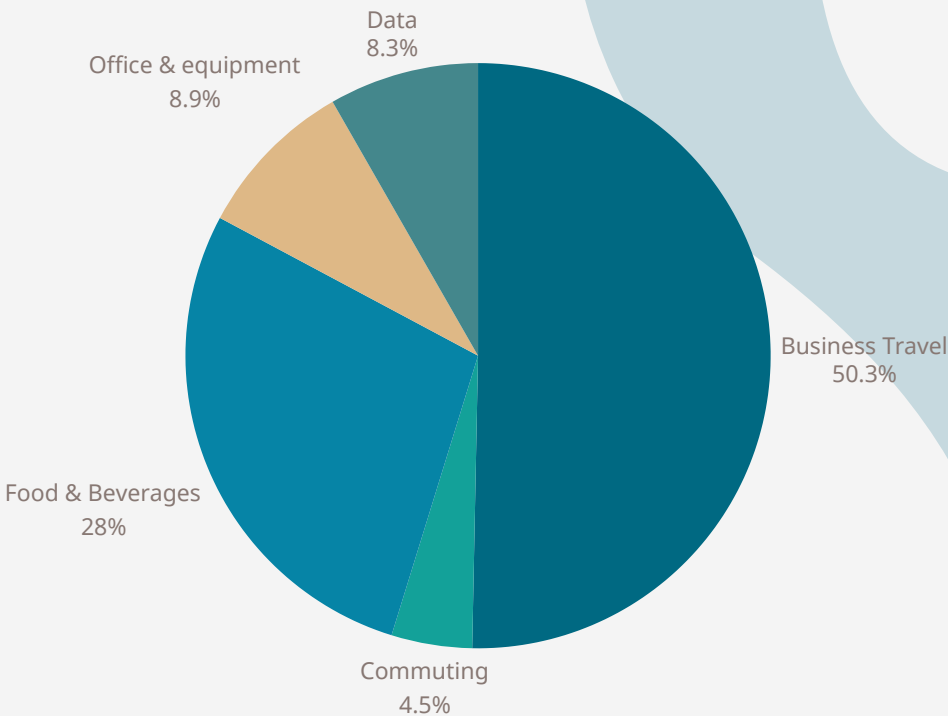
Beyond measuring our direct emissions, we are closely monitoring the ratio between the carbon impact of our own activities and the emissions potentially avoided through smarter infrastructure decisions enabled by our platform. It reaches **1 ton emitted for 20,273 t** potentially avoided, vs 1 for 6,741 in 2023. **Improving this ratio over time is one of ORIS's ambitions.**

To further reduce our carbon footprint, we are actively exploring additional strategies, including the implementation of a low carbon travel policy and an optimization of data storage.

As we advance, we will continue to assess and implement actions that align with our mission: designing inclusive, efficient, resilient, and low-carbon infrastructure projects.



ORIS GHG Emissions by Scope



Share of ORIS GHG Emissions by Source in 2024



157.31t emitted in 2024



1t of GHG emissions for 20,273 potentially avoided from our activities

ORIS CO₂ Calculator:

Measuring Aggregates Impact with a Robust Tool

The ORIS CO₂ Calculator was developed to **provide the aggregates industry with fast, accurate, and transparent carbon footprint assessments based on a rigorous scientific approach.** In compliance with international standards, including EN 15804+A2, ISO 21930, and ISO 14067, and aligned with the European Construction Products Regulation (CPR), the tool provides clients with a carbon footprint declaration.

By automating complex life-cycle assessment (LCA) calculations, the ORIS CO₂ Calculator delivers a reliable product-specific carbon footprint analysis within just seven days. This enables quarry operators and managers to understand their Global Warming Potential (GWP), identify opportunities for reducing environmental impact, and make more sustainable operational decisions.

The tool was launched in September 2023 on the German market and in October 2024 in France.

Over 2024, the CO₂ calculator evaluated 38 sites and 235 products, for a total volume of 15.2Mt of aggregates.

The tool bridges a critical gap in the industry by combining advanced environmental engineering with digitalisation and ease of use, making it accessible to professionals across operations, quality, and environmental management. It supports the construction sector's transition toward sustainability by fostering transparency, aligning with regulatory demands, and empowering stakeholders to take meaningful climate action.

CASE STUDY

Empowering Holcim Germany to Measure its Aggregates' CO₂ Footprint

HOLCIM Germany, a leading player in the construction materials industry, partnered with ORIS to measure the carbon footprint of its aggregates using the ORIS CO₂ calculator. By using this solution, HOLCIM Germany can systematically assess the carbon footprint of its entire product portfolio, paving the way for actionable insights to reduce emissions.

2024 KEY FIGURES



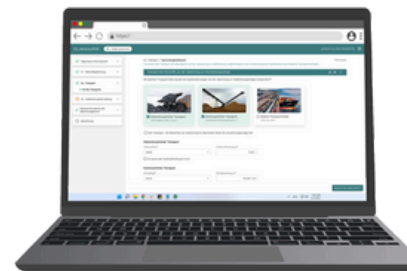
38 sites evaluated



235 products evaluated



15.2Mt of aggregates



**Enter your aggregate production data
from extraction to production
with just a few clicks.**



**Get your carbon
footprint certificate
in 7 days**

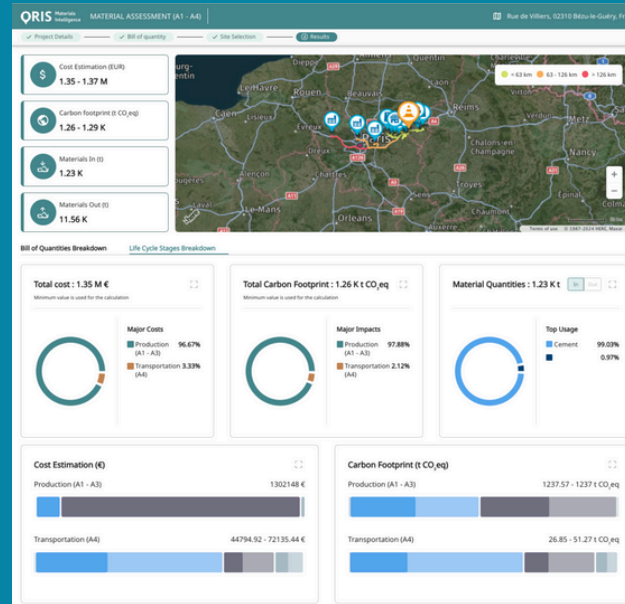


ORIS Materials Intelligence: Assess, Compare & Optimise for Linear Transportation Sustainable Infrastructure

ORIS Materials Intelligence is our **cloud-based software to assess, benchmark, and compare multi-criteria** such as transport cost, materials consumption and carbon emissions impact on infrastructure schemes.

With a consistent, centralised database of materials and a carbon calculation methodology approved by Intertek, **ORIS provides a comprehensive view of the sustainability of infrastructure designs and helps infrastructure professionals to harmonise the decision-making process.**

ORIS Materials Intelligence empowers users to optimise their designs by integrating geolocated data and following Life Cycle Assessment (LCA) principles, ensuring that infrastructure projects are both innovative and aligned with sustainability goals. With its intuitive interface and scientifically validated methods, ORIS Materials Intelligence streamlines the path to low-impact, sustainable infrastructure.



AUTODESK PLUG-IN

The ORIS plugin for Autodesk Civil 3D streamlines the design process by automating carbon impact assessments directly within the Autodesk software. It eliminates manual data transfers, saving time and effort, while enabling rapid comparison of low-carbon material alternatives. With seamless integration, users can quickly assess the environmental impact of their designs and generate certified reports, all within Autodesk Civil 3D. This tool empowers design teams to make sustainability-driven decisions early in the process, preventing costly rework and optimizing project outcomes.

 **AUTODESK**



CASE STUDY

Automating Carbon Reduction in Highway Design with Sweco

Sweco partnered with ORIS to integrate the ORIS for Autodesk® plugin into their highway design process, replacing time-consuming manual carbon calculations. This tool seamlessly transfers pavement data from Autodesk® Civil 3D into ORIS, enabling real-time carbon footprint assessment. By automating these calculations, designers shifted focus from data entry to sustainable design and engineering. The result: earlier identification of carbon reduction opportunities, leading to more sustainable infrastructure decisions. Sweco engineers provided direct feedback, enhancing the plugin's efficiency. The tool enables carbon reductions of up to 50% and resource savings of up to 80%. This collaboration demonstrates how digital innovation drives sustainability in early design phases.

2024 KEY FIGURES



+1,400 users



+300 plug-in downloads

Tech-Enabled Services for Sustainable, Resilient, and Efficient Linear Transportation Infrastructure

ORIS provides **tech-enabled consulting services focused on the planning of sustainable, efficient, safe and resilient transport infrastructure**. Leveraging the ORIS platform, the consulting team enables comprehensive assessments of linear transportation infrastructure projects. This approach involves early due diligence and interactive simulations to optimise road designs looking at costs, resource efficiency, and climate mitigation & adaptation.

Key aspects of ORIS's consulting services include the **evaluation of pavement designs to reduce carbon footprints and material usage, promoting circular economy practices by integrating recycled materials, and ensuring alignment with climate resilience goals**. The platform's life cycle assessment methodologies allow stakeholders to analyse carbon emissions and resource consumption throughout a project's lifecycle, from material sourcing to construction and maintenance.

ORIS also incorporates road safety analysis using iRAP's star ratings frameworks, identifying measures to enhance safety standards, targeting UN standards' 3-stars.

Through these multi-criteria evaluations, ORIS supports stakeholders in creating transport infrastructure that aligns with sustainability goals while maintaining operational efficiency.

CLIMATE RESILIENCE METHODOLOGY

ORIS has developed a unique climate resilience methodology to evaluate and enhance the durability of infrastructure against climate risks while addressing social and environmental priorities. By combining advanced data analysis with artificial intelligence, **the model assesses three critical dimensions: exposure to increased climate hazards, based on the IPCC models, vulnerability of infrastructure and the social importance of infrastructure links**.

This holistic approach enables ORIS to **pinpoint the most critical elements within extensive transportation networks**, ensuring investments are targeted where they are most needed.

The model prioritises road segments that connect communities to essential services, reinforcing social equity and resilience. With the data collected and modelled, ORIS team proposes tangible adaptation and mitigation measures to reduce risks and impact on the infrastructure.



Engaging with the Whole Ecosystem

CASE STUDY NATIONAL HIGHWAYS

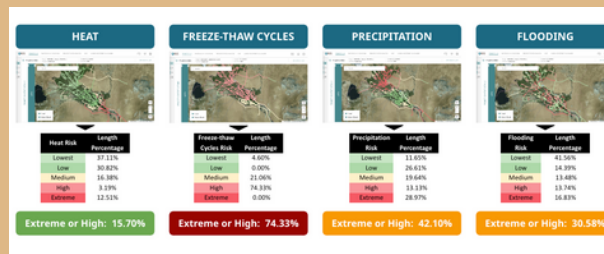
Analysing Circular Economy Opportunities for National Highways' Concrete Roads Programme

National Highways is focused on repairing and replacing concrete roads within the Strategic Road Network that are approaching the end of their service life. ORIS and AECOM assessed the feasibility of repurposing the concrete waste generated from this life extension works into 2 options: Crushed Concrete Aggregates (CCA) and Recycled Concrete Fines (RCF), for new precast elements supplied to National Highways Schemes. Using our platform and Life Cycle Analysis (LCA) approach, our team evaluated different material sourcing and formulation scenarios, showing a potential CO₂ reduction of up to -14.7%, demonstrating the benefits of a circular economy approach. ORIS provided data-driven insights on material sourcing, formulation scenarios, and their environmental impact. This initiative supports National Highways' sustainability goals - optimising infrastructure resilience while reducing carbon footprints.

CASE STUDY CENTRAL ASIA

AI-powered Climate Resilience Assessment in Central Asia

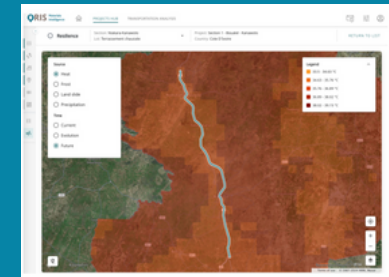
ORIS conducted a climate risk assessment for a 7,765 km road network in Central Asia for the Asian Development Bank, identifying that 25% of the roads were highly vulnerable to climate hazards, impacting 30% of the local population. Using its AI-driven methodology, ORIS analysed climate exposure, infrastructure vulnerability, and socio-economic factors, providing data-driven insights to prioritise resilient infrastructure investments. Key recommendations included material upgrades, improved drainage, and adaptive planning to enhance long-term road sustainability.



CASE STUDY UNIDO

Multi-criteria Assessment in West Africa with UNIDO

In partnership with UNIDO - under the Roads4People program - ORIS conducted a multidimensional analysis, assessing material sourcing, emissions, and climate vulnerabilities for a 117 km highway project in West Africa. Identified alternative pavement structures optimise material use (-12%), reduce CO₂ emissions (-12%), and cut costs (-between 2.5% and 6%). The study identified extreme temperature increases (up to 39.15°C) and high flood risks, requiring adaptation measures. This project enhances road durability while improving regional connectivity and economic resilience.



Our Main
Clients &
Partners

ARCADIS

RAMBOLL

AGGREGATE
INDUSTRIES

AtkinsRéalis

EUROVIA

SWECO

Die
Autobahn

AECOM

UNIDO

HOLCIM

ADB

Ramboll Partnership: Integrating Carbon Emissions Assessment from the Use Phase through FuelSave Integration

Following an agreement signed in November 2024 with Ramboll, **ORIS is integrating Ramboll's FuelSave solution into its platform**, creating a powerful tool for assessing the entire lifecycle of road projects, from construction to traffic emissions.

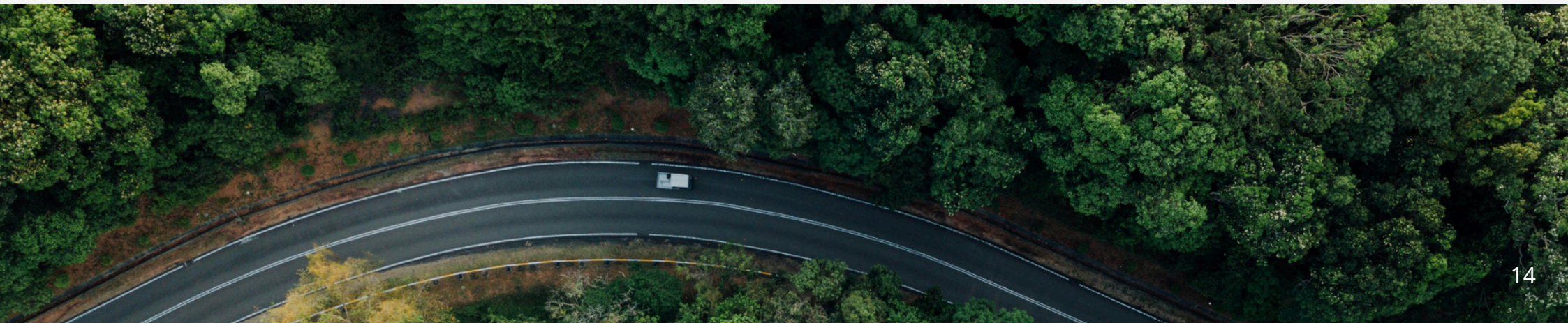
This collaboration focuses on decarbonizing the road infrastructure sector - **including during the use phase** - with traffic-related emissions represent between 70% to 90% of a road's total lifecycle carbon footprint.

As part of the agreement, **Ramboll will adopt ORIS across its global teams** to provide a unified platform for sustainability assessment in the road infrastructure sector. Ramboll will gradually replace its internal tool, ZeroInfra, with the **ORIS solution, which will become a standard part of Ramboll engineers' toolkit.**

This partnership further strengthens ORIS's leadership in sustainable infrastructure, offering a unique solution that includes emissions from embedded carbon at construction and traffic-related emissions over the road's life.

Through this integration, ORIS and Ramboll are **advancing the goal of achieving global climate action**, with road transportation responsible for c. 12% of global GHG emissions (source: WRI).

With Autodesk supporting the deal, this collaboration empowers decision-makers to make more sustainable design choices, scaling up impact and enabling the transportation sector to take crucial steps toward a decarbonized future.



Roads4People: A Global Partnership for Sustainable and Inclusive Road Development

In July 2023, ORIS Materials Intelligence partnered with the United Nations Industrial Development Organization (UNIDO) to launch Roads4People, an ambitious program designed to transform infrastructure development. **This initiative aims to enhance road infrastructure development through digitalisation, and rebalance investments towards rural and local road networks to empower underserved communities and drive socio-economic growth.**

Roads4People adopts a systemic, forward-thinking approach to infrastructure planning by leveraging ORIS's advanced digital platform. This platform supports the creation of optimised, safe, resilient, sustainable, and inclusive transportation networks, aligning infrastructure investments with long-term social and environmental priorities.

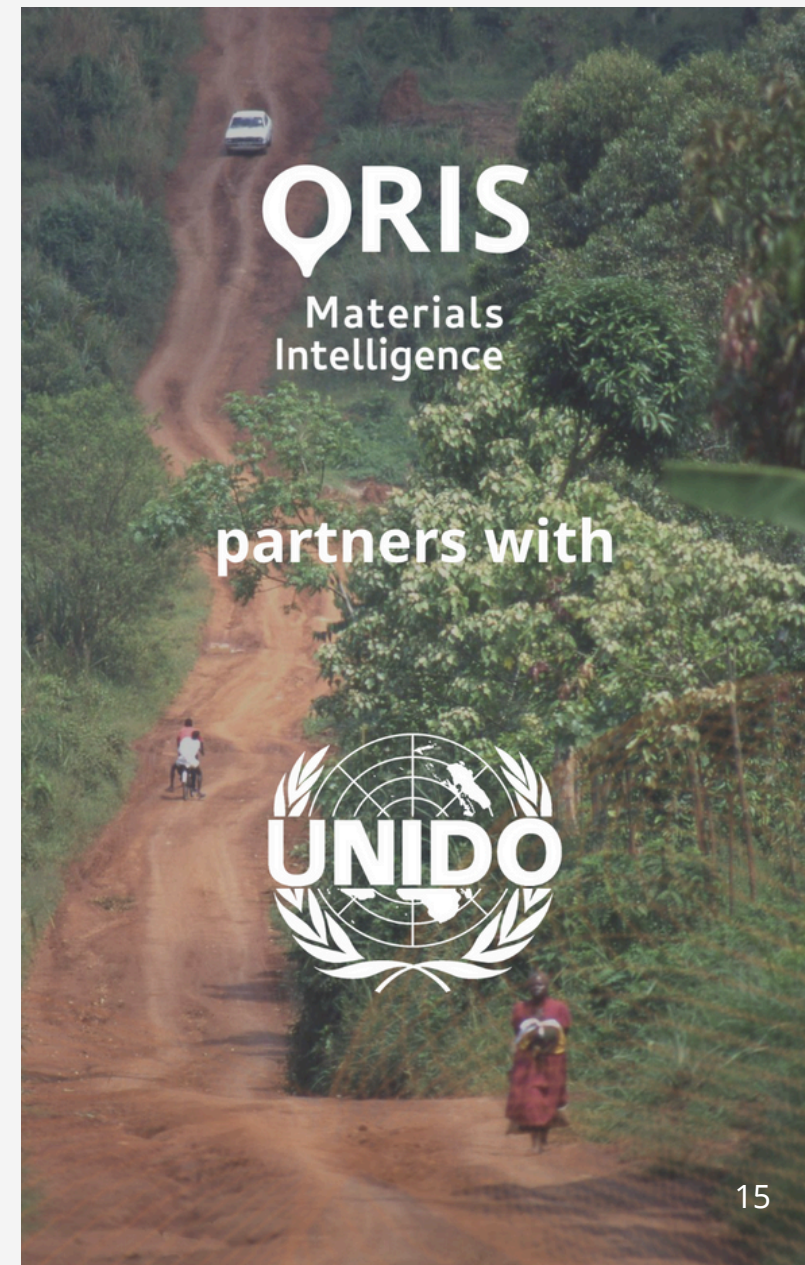
CÔTE D'IVOIRE AS A PILOT COUNTRY

In 2024, **Côte d'Ivoire was selected as the pilot country** for the Roads4People program. Côte d'Ivoire serves as a testing ground for the initiative's innovative methodologies, to enhance the country's road infrastructure development, and increase investments in rural areas, which are critical for the country's socio-economic development. ORIS, with its partner UNIDO, has been engaging with the government of Côte d'Ivoire to define critical challenges and opportunities, and tailors this innovative approach to the country's needs and context.

The program in Côte d'Ivoire integrates **innovation, resource mobilisation, and inclusive infrastructure development** to address the nation's specific challenges. Focusing on rural road networks aims to catalyse sustainable industrial growth while connecting communities to essential services and opportunities.

A MODEL FOR GLOBAL IMPACT

The Roads4People pilot project in Côte d'Ivoire is designed **to demonstrate the transformative potential of systemic and inclusive infrastructure planning.** Insights gained from this project will inform the program's expansion to other developing regions, offering a scalable model for creating modern, efficient, and sustainable road networks worldwide.



Governance



Nicolas MIRAVALLS
CEO & Co-Founder



Renaud DE MONTAIGNAC
COO & Co-Founder



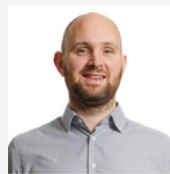
Rachel AOUST
Chief Financial Officer



Sabrina BUQUOY
Chief Revenue Officer

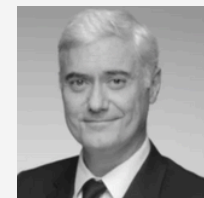


Laurent GIVAUDAN
Chief Data Officer

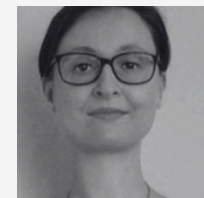


André WEIGELT
Chief Technology Officer

MANAGEMENT COMMITTEE



Edelio BERMEJO
President of the Board



Audrey TURBIEZ
Member of the Board



Jason MÜHLECK
Member of the Board



Susanna ZAMMATARO
Independent Board Member

SUPERVISORY BOARD

Committed to Data Privacy, Ethics, and Responsible Governance

ORIS is committed to upholding top-tier standards in data privacy, governance, and ethical business practices.

COMPLIANCE & SECURITY MEASURES

As part of its governance framework, **ORIS complies with international certifications**, including SOC 2 Type 2, ensuring rigorous data security, confidentiality, and availability controls. The company has also received its certification ISO 27001 in 2024, a globally recognized standard for information security management, further cementing its dedication to protecting sensitive data and maintaining stakeholder trust.

Privacy is embedded in ORIS's operations through a **"Privacy by Design" approach**, ensuring that data protection is considered at every stage of product development. The company also enforces strict third-party risk management, requiring vendors and partners to meet its high data privacy and security standards. This ensures that external collaborations align with ORIS's commitment to safeguarding customer and stakeholder information.

In 2024, ORIS **strengthened its internal governance by revising and expanding its compliance policies**, ensuring alignment with evolving regulatory requirements and industry best practices. The company also integrated automatic security monitoring into its tool landscape, enabling real-time threat detection, anomaly detection, and automated response mechanisms to enhance cybersecurity resilience. These advancements reinforce ORIS's proactive stance on risk management and continuous improvement in data protection.

ETHICAL STANDARDS

Ethics form the cornerstone of ORIS's operations, **supported by its comprehensive Code of Conduct**. This policy explicitly prohibits child labor, forced labor, human trafficking, and discrimination, while actively promoting accident prevention and other workplace safety measures. ORIS also maintains a **whistleblower channel accessible to both internal and external stakeholders**. This mechanism allows confidential reporting of ethics-related issues such as data breaches, bribery, misconduct, and harassment, ensuring accountability and a culture of transparency.

To reinforce its ethical and governance commitments, ORIS conducts ongoing training programs to educate employees on data privacy, security best practices, and ethical decision-making, fostering a culture of responsibility and awareness.

AI GOVERNANCE

AI governance within our organization is **guided by the principles of Transparency, Fairness, Accountability, Privacy, and Security**. We are committed to providing clear documentation on the functioning and decision-making processes of AI systems, ensuring stakeholders understand the rationale behind outcomes while disclosing system limitations and potential risks. To uphold Fairness, we implement systematic checks to identify and mitigate biases in datasets, algorithms, and decision-making processes. Accountability is ensured by assigning clear ownership and responsibility throughout the AI lifecycle, from development to deployment and monitoring. In adherence to our Data Management Policy, we strictly comply with data protection laws, ensuring responsible handling of personal data.

Finally, as outlined in our Secure Development Policy, we safeguard AI systems against unauthorized access, breaches, and manipulation through advanced security protocols, continuous monitoring, and resilience planning.

The company's approach to ethics and data governance reflects **its commitment to good governance principles and social responsibility**, aligning with initiatives like the UN Global Compact.



ORIS's Commitment to a Thriving, Inclusive, and Innovative Workplace

At ORIS, employees are central to the company's strategy, underscoring the vital role they play in driving organisational success. ORIS fosters a dynamic, inclusive, and supportive work environment, prioritising its people's well-being, growth, and empowerment.

EMPLOYEE WELL-BEING AND MENTAL HEALTH

ORIS recognises **that employee well-being is essential to both productivity and long-term engagement.** Committed to fostering a healthy work environment, ORIS implements initiatives that support well-being. Proactive measures, such as workshops addressing workplace challenges and identifying areas for improvement, help cultivate a culture of care and resilience. Additionally, our main offices are being redesigned to feature more ergonomic and employee-friendly workspaces.

To strengthen team spirit and cohesion, ORIS also organises bi-annual retreats that bring the entire team together.

INCLUSIVE WORKPLACE AND DIVERSITY

ORIS celebrates the strength of varied perspectives, cultivating **a workplace that is international, diverse, and gender-balanced.** Through non-discriminatory hiring practices and flexible working conditions, ORIS ensures fairness and aims to foster an inclusive culture where all employees feel valued and supported.

CAREER GROWTH & TRAINING

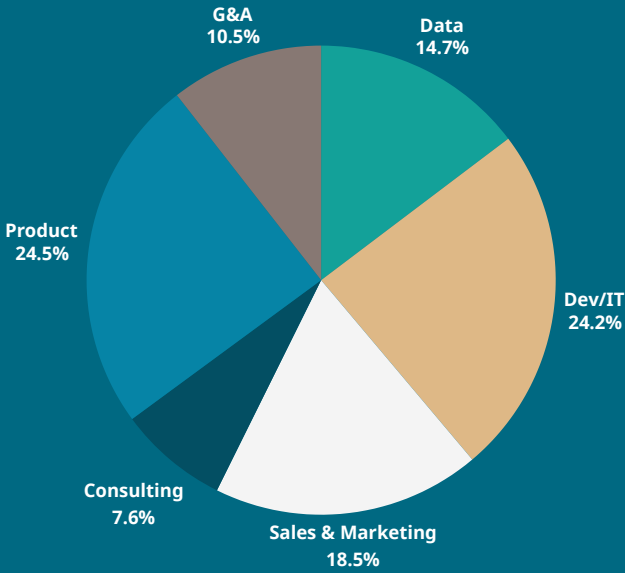
ORIS is dedicated to fostering **the professional growth and development of its employees,** equipping them to thrive in a rapidly evolving environment. The company emphasises continuous learning through access to training, regular performance evaluations, and personalised career development discussions.

By encouraging exploration of advanced AI tools, ORIS not only fosters a culture of innovation, but also ensures that its workforce adapts to industry advancements and stays ahead of emerging trends.

FLEXIBLE AND EQUITABLE WORKING CONDITIONS

Recognising the importance of work-life balance, **ORIS offers flexible working arrangements,** including telework options. These measures provide employees the autonomy to manage their objectives within an adaptable framework. In addition, ORIS ensures equitable growth and well-being through social benefits and fair remuneration.

ORIS' team is mostly based in France, with team members located in the United Kingdom, Austria, Germany, Belgium, Spain, and in the Philippines.



Share of employees by function



41.64 FTEs



9.46 hours of training on average



38% of female employees

Driving Sustainability: The Role of Decision Makers in Considering Construction Materials at the Early Stages of Linear Infrastructure Design

ORIS Materials Intelligence emphasises the crucial role of integrating construction materials early in the design process of linear infrastructure projects to improve sustainability, resilience, and cost-efficiency. To achieve these objectives, ORIS **advocates for a comprehensive, project-specific approach at the early stages of projects, considering each infrastructure initiative's unique characteristics and sourcing environment.** Decision makers play a key role in driving sustainability, and their decisions at this stage significantly influence the project's long-term success.

ORIS **partners with global organisations**, including the International Road Federation, Multinational Development Banks, PIARC, and others, to promote the integration of these principles into infrastructure projects worldwide. This collaboration fosters a more sustainable, resilient approach to developing linear infrastructure.

KEY PRINCIPLES FOR SUSTAINABLE INFRASTRUCTURE

Key principles that should guide infrastructure projects include:

- **Local Sourcing:** Materials in the local environment often provide the most sustainable option. Leveraging locally sourced materials reduces transportation-related environmental impacts and supports the local economy.
- **Carbon Footprint:** A whole life cycle analysis (LCA) is vital for assessing a project's carbon footprint. This in-depth assessment identifies opportunities for carbon reduction across the project's lifecycle, encouraging environmentally responsible practices.
- **Carbon Pricing:** Assigning a monetary value to carbon emissions integrates the societal costs of carbon into decision-making. This approach drives the adoption of responsible business practices throughout the construction value chain.
- **Durability and Resilience:** Ensuring that infrastructure is durable and resilient to extreme weather events is crucial. Focusing on long-term performance minimizes the need for frequent maintenance, reduces costs, and extends the service life of infrastructure, benefiting communities for years to come.
- **Circular Economy:** Identifying materials for reuse early in the design phase promotes a circular economy, reduces dependence on primary natural resources, and extends the lifecycle of materials, contributing to sustainability.

PARTNER ORGANISATIONS

ORIS is a member/active in:

IRF (International Road Federation): IRF is a global organisation promoting sustainable road infrastructure development and facilitating collaboration among road professionals to improve mobility and safety worldwide.

Alliance pour la Décarbonation des Routes: This French alliance focuses on decarbonising the road sector by supporting the adoption of sustainable practices and technologies to reduce carbon emissions in road infrastructure.

INEC (Institut pour l'Économie Circulaire): INEC is dedicated to advancing the principles of circular economy in France, focusing on sustainable resource management, waste reduction, and promoting the reuse of materials across industries.

Life-Links: Life-Links is an organisation focused on connecting global stakeholders to advance climate-resilient supply chains.

PIARC: PIARC is an international association dedicated to the development of road infrastructure and transportation systems, promoting knowledge exchange and best practices in road safety, sustainability, and technology.

UN Global Compact: The UN Global Compact is the world's largest corporate sustainability initiative, uniting businesses and organisations to align their strategies and operations with ten universal principles in the areas of human rights, labor, environment, and anti-corruption, while advancing the UN's Sustainable Development Goals (SDGs).



Impact Report Scope and Methodology

This report follows the EU Voluntary Reporting Standards for SMEs ('VSME') guidelines published in December 2024, providing a comprehensive overview of the relevant information concerning ORIS Materials Intelligence's operations.

The scope of the report covers the company under the legal entity 'ORIS SAS', with registered address: 54 avenue Hoche, 75008 Paris, France. The company's registration number is 903 014 108 and NACE code is 62.01.

The company's main offices are located 26 rue du Général Mouton Duvernet, 69003 Lyon, France (Geolocation: 45.7542807, 4.8613965).

As the VSME framework allows, certain information have been omitted in this report due to confidentiality reasons or lack of materiality. It includes:

- Size of balance sheet
- Turnover
- B4 - Pollution on air, water and soil
- B5 - Biodiversity
- B6 - Water
- B7 - Resources, Circular Economy & Waste Generation
- B10 (b) - Gender pay gap (as number of employees is below 150)
- C4 - Climate risks

This ensures that the report remains focused and aligned with the VSME guidelines, while safeguarding sensitive or non-material data.

This report was prepared by Elodie Woillez, with contributions and approvals from Nicolas Miravalls, Renaud de Montaignac, Koji Negishi, Rémi Thiébaut, Caroline Delerue, André Weigelt, Laurent Givaudan, Laura Traseira-Pineiro, Léa Fischer, Alain Anthony Mardo, Carole Martinez & Hugo Pley-Leclercq.

hello@oris-connect.com

www.oris-connect.com



Key Figures 2024

ENVIRONMENTAL & SOCIAL IMPACT	2024	2023
Carbon emissions potentially avoided through our projects (in M tons CO ₂ eq.)	3.2	0.9
Volume of carbon emissions measured (in M tons)	14.8	5.2
Use of primary resources potentially avoided through our projects (in M tons)	4.4	17.8
Budget project potentially saved through our projects (in \$M)	24	163.3
Networks assessed for climate resilience (in km)	18,553	8,029
ORIS Materials Intelligence Carbon Footprint (in tons CO₂ eq.)	157.31	130.21
Scope 1	5.81	7.20
Scope 2	21.02	22.91
Scope 3	130.49	100
Ratio ORIS Carbon Footprint/Emissions avoided (in tons)	1 for 20,273	1 for 6,741

Key Figures 2024

ENVIRONMENTAL & SOCIAL IMPACT	2024	2023
Electricity Consumption (in MWh)	13.44	-
incl. renewable	4.98	-
Fuel Consumption (non renewable) (in MWh)	13.71	-
Number of sites available on the platform	44,169	22,262
Number of consulting projects	16	16
Number of users	+1,400	+900
Number of aggregates sites assessed with the CO₂ calculator	38	-
Number of products assessed with the CO₂ calculator	235	-
Volume of aggregates assessed with the CO₂ calculator (in MT)	15.2	-
Number of events and conferences attended	17	26
Number of scientific papers published	5	3

Key Figures 2024

EMPLOYEES	2024	2023
Number of Employees (in FTE eq.)	41.64	27.29
In France	34.99	20.33
Abroad	6.65	6.96
With temporary contracts	2.5	-
Female employees	15.65	7.59
Employees with disabilities	0	0
Share of Employees by function (in FTE eq.)		
Data	6.12	3.88
Development/IT	10.06	3.06
Sales & Marketing	7.69	9.82
Consulting	3.16	6.84
Product	10.22	2.68
G&A	4.39	1

Key Figures 2024

EMPLOYEES	2024	2023
By Age (in FTE eq.)		
Below 30	12.55	8.44
30-50	26.83	16.85
Above 50	2.26	2
Number of employees who left over the period	5	3
Turnover	25.89%	-
Number of work-related injuries or ill health	0	0
Number of days lost to work-related injuries and fatalities from work-related accidents, work-related ill health and fatalities from ill health	0	0
Do employees receive pay that is equal or above applicable minimum wage?	Yes	Yes
Average number of training hours per employee	9.46	12.26
Number of home office days on average per employee	71.8	78

Key Figures 2024

GOVERNANCE	2024	2023
Supervisory Board		
Number of members	4	4
inc. females	2	3
Management Committee		
Number of members	6	5
inc. females	2	1
Trainings		
Trainings related to compliancy	56 persons	-
Trainings related to anti-bribery & corruption	6 persons	-
Incidents		
Incidents related to corruption or bribery	0	0
Incidents related to privacy breach	0	0
Incidents related to human rights violation	0	0

An aerial photograph of a two-lane road winding through a dense forest. A semi-truck is visible on the road. The image is framed by a dashed white border. On the left side, there is a large, semi-transparent circular graphic element that looks like a magnifying glass or a lens, focusing on the forest. The text "Acting Now for Sustainable Infrastructure" is centered over the image in a large, white, sans-serif font.

Acting Now for Sustainable Infrastructure

hello@oris-connect.com
www.oris-connect.com

ORIS
Materials
Intelligence